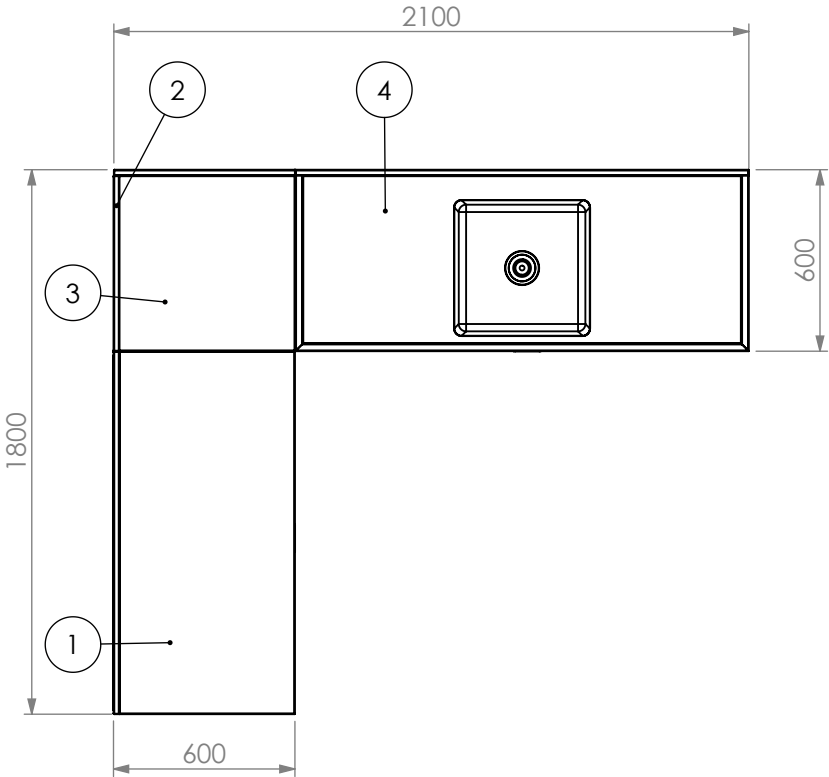
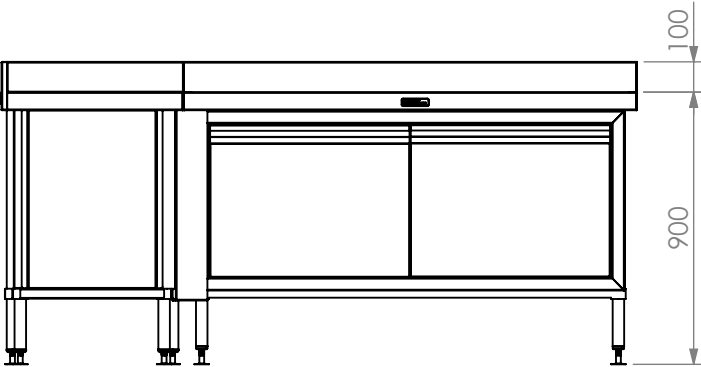


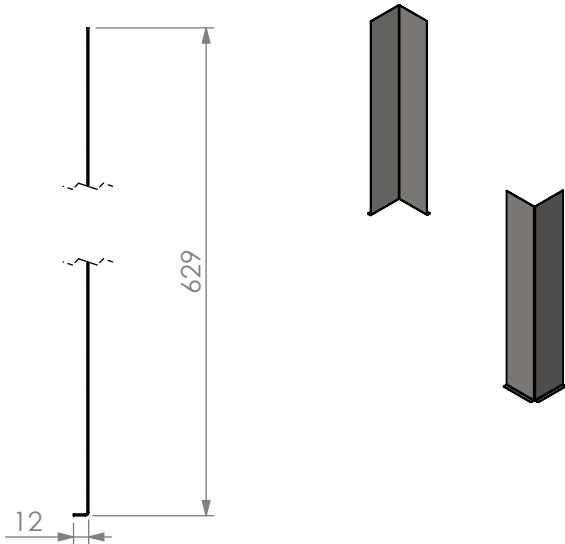
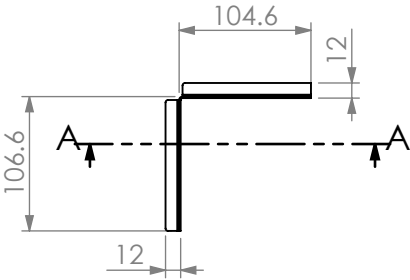
ITEM NO.	PART NUMBER	DESCRIPTION	QTY.
1	02-6-1200	WORKBENCH W/SPLASHBACK	1
2	END UPSTAND 600	END UPSTAND FOR 600 SERIES	1
3	02-6-0600	WORKBENCH W/SPLASHBACK	1
4	05-6-1500C	SINKBENCH W/SPLASHBACK	1
5	32-DPK-6-1200	DOOR PANEL KIT	1
6	32-DPK-6-1500	DOOR PANEL KIT	1
7	DPK-CIP	CORNER INFILL PANEL	1



PLAN

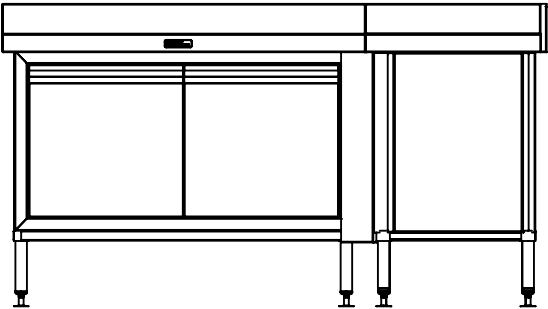


FRONT ELEVATION

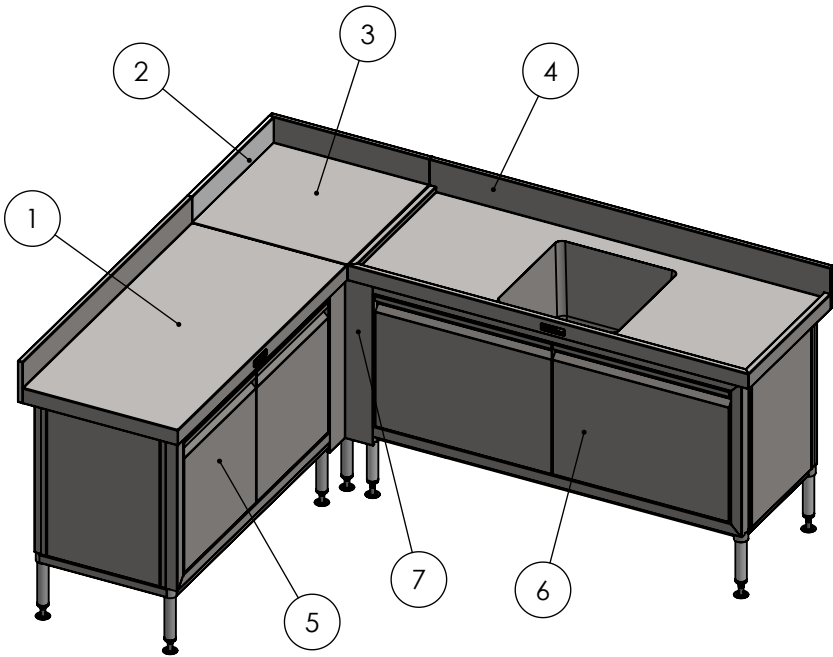


SECTION A-A

CORNER INFILL PANEL DETAIL



SIDE ELEVATION



SIMPLY

STAINLESS

Modular Solutions for Kitchens & Bars

COPYRIGHT © 2024

This drawing is the property of CI GROUP PTY LTD. Tradings as SIMPLY MODULAR BARS and It may not be copied, reproduced or modified in whole or in part without prior written permission of CI GROUP PTY LTD. SIMPLY MODULAR BARS reserves the right to change specification and design without notice.

INFILL PANEL FOR A CORNER APPLICATION	REV
--	-----

SIZE: A3 SCALE : 1:25
CONSTRUCTION NOTES :

- 1. TOPS MADE FROM 304 GRADE, 1.2mm STAINLESS STEEL.
- 2. CORE MADE FROM 3mm ZINCALUME.
- 3. INFILL MADE FROM 1.2mm STAINLESS STEEL.
- 4. REFER TO WEBSITE DRAWINGS FOR FULL SPECIFICATIONS.
- 5. FEET ARE ADJUSTABLE STAINLESS STEEL DISC SHAPE.
- 6. CONTRACTORS MUST CHECK ALL DIMENSIONS ON SITE.
- 7. ANY SITE OR PRODUCT MODIFICATION IS THE RESPONSIBILITY OF THE CONTRACTOR.

CLIENT'S APPROVAL

NAME AND SIGNATURE

DATE

